

# TECHNICAL INFORMATION

## UNDERFLOOR HEATING TOPFLOW SCREED C BELITEX

Topflow Screed C Belitex is made from a cementitious binder, special additives and selected aggregates. These are mixed with clean potable water to produce a flowing pumpable screed (manufactured to BSEN13813:2002). This is ideal for applications over warm water and electrical underfloor heating systems.

Topflow Screed C Belitex fully envelopes the heating pipe eliminating air voids and honeycombing. This enhances heat transfer between the pipe and the screed giving higher thermal conductivity than conventional sand cement screeds.

- Sand cement screeds (1.1w/mK)
- Topflow Screed C Belitex (1.7w/mK).

Nominal covering to the pipe (30mm) results in improved reaction times over traditional sand cement coverings usually placed at 60mm cover to the pipe.

### KEY INSTALLATION POINTS

Pipes must be securely fixed to prevent floatation and lifting during the application of the screed. Pipes should be pressurised in accordance with BS1264:2001:4.

### COMMISSIONING PROCESS

The commissioning process should not be started until the screed is a minimum of 14 days old. Starting the heating cycle too early may cause thermal shock and cause the screed to crack. Please follow the guidelines below.

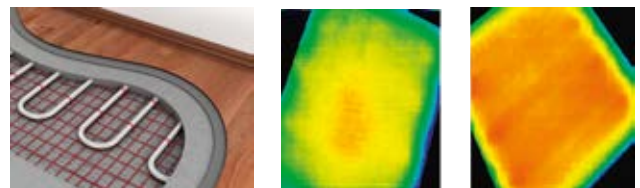
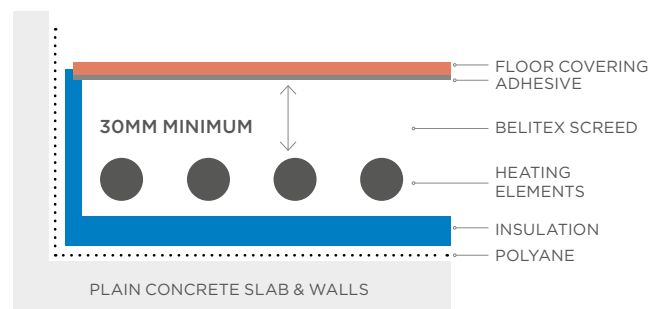
#### From Day 14

- Day 1 - set temperature to 5°C above ambient
- Day 2 onwards - increase temperature by 5°C a day up to a running temperature of 40°C
- Hold for 3 Days
- Reduce by 10°C per day down to 20°C
- Turn heating off for two days
- Check moisture (typically 75%RH) (Either a rubber mat, polythene sheet or hair hygrometer as per post installation guidelines)
- Install floor coverings

### JOINTING

Bays of up to 250m<sup>2</sup> can be installed over underfloor heating pipes, however joints should be formed between different heating zones operating off separate manifolds and between areas of heated and unheated floors.

### TYPICAL FLOOR MAKE UP INCLUDING UNDERFLOOR HEATING PIPES



**CHRYSO** **TOPFLOW**  
SCREED C BELITEX

For more details contact

0800 1218 218

enquiries@tarmac.com

topflowscreed@tarmac.com

TARMAC.COM